

OWNERS OF RECORD
 WEST VALLEY, L.L.C. A CALIFORNIA LIMITED LIABILITY COMPANY
 1073 CRENSHAW ROAD, SUITE 1110
 ROSHARON, CA 94598

APPLICANT
 WEST VALLEY, L.L.C. A CALIFORNIA LIMITED LIABILITY COMPANY
 1073 CRENSHAW ROAD, SUITE 1110
 ROSHARON, CA 94598

ENGINEER
 TNA Engineering, Inc.
 10000 Skyway Blvd., Suite 200
 San Ramon, CA 94583

MAP SCALE
 1" = 40'

CONTOUR INTERVAL
 CONTOUR INTERVAL = 1'

SOURCE OF TOPOGRAPHY
 AERIAL PHOTOGRAPHY & FIELD SURVEY

SECTION, TOWNSHIP and RANGE
 A PORTION OF SECTION 13, 13 N., R2 E. M2E

ASSESSOR'S PARCEL NUMBERS
 A.P.N. 118-16-47

EXISTING ZONING
 R20

TOTAL AREA
 8.00 ACRES

TOTAL NO. of LOTS/TOTAL LOT AREA

2 LOTS	
PARCEL 1	4.78 AC.
PARCEL 2	3.22 AC.
TOTAL AREA	8.00 AC.

WATER SUPPLY
 E. DORADO RESOLUTION DISTRICT

SEWAGE DISPOSAL
 E. DORADO RESOLUTION DISTRICT

PROPOSED STRUCTURAL FIRE PROTECTION
 E. DORADO HELD BY GOVERNMENT

DATE OF PREPARATION
 SEPTEMBER 2008

08 OCT 21 PM 3:10
 RECEIVED
 PLANNING DEPARTMENT

LEGEND

- Parcel 1, 1 Boundary Line
- Existing Lot Lines
- Road or Way Line
- Existing Line

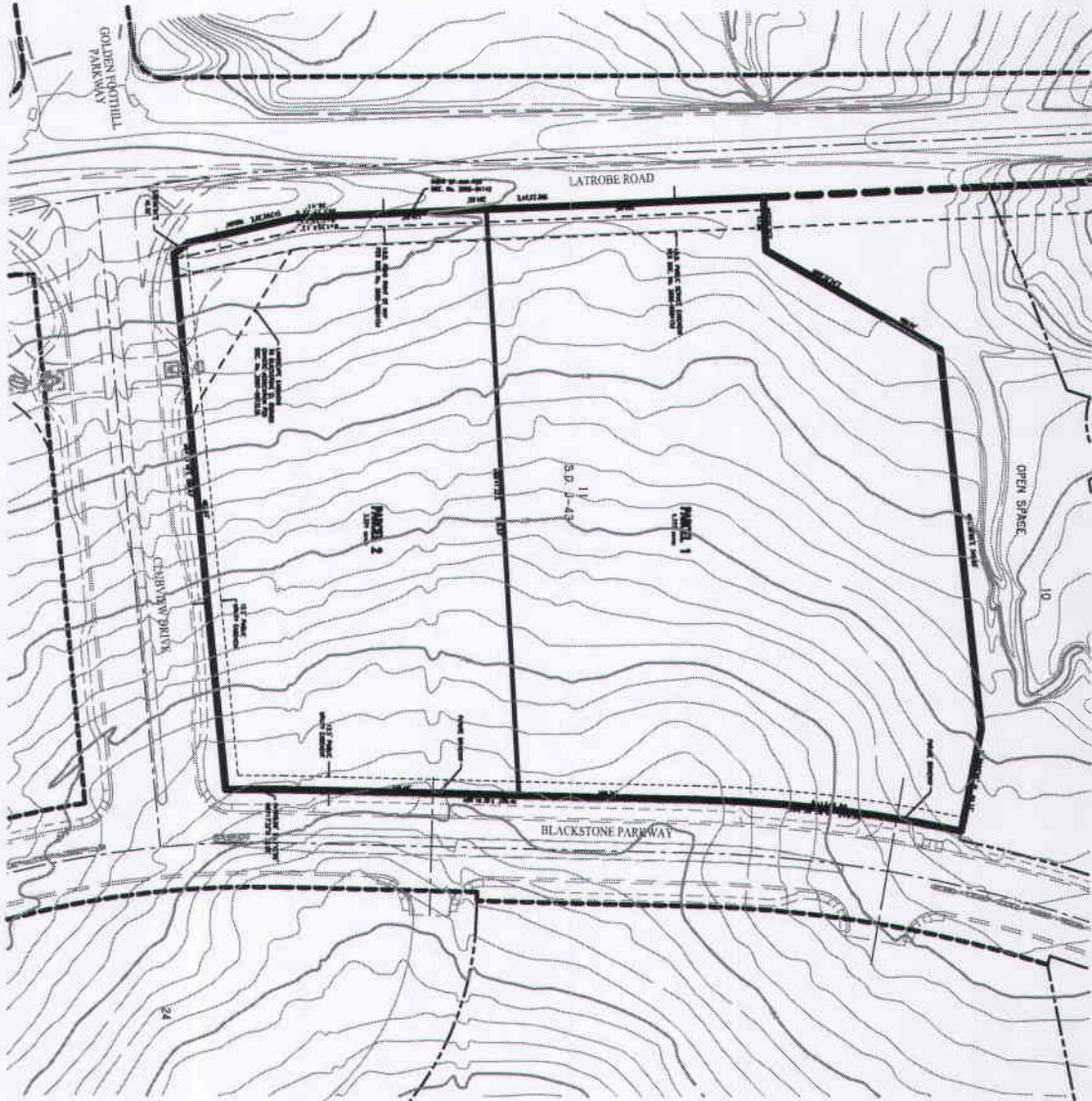
TENTATIVE PARCEL MAP

WEST VALLEY VILLAGE, LOT X

LOT 11, BK. J PG. 43

COUNTY OF EL DORADO SEPTEMBER, 2008 STATE OF CALIFORNIA

SHEET 1 OF 1



SCALE: 1"=40'

