

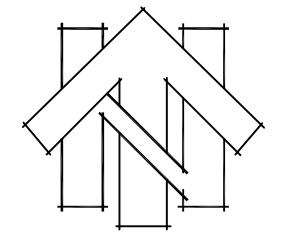
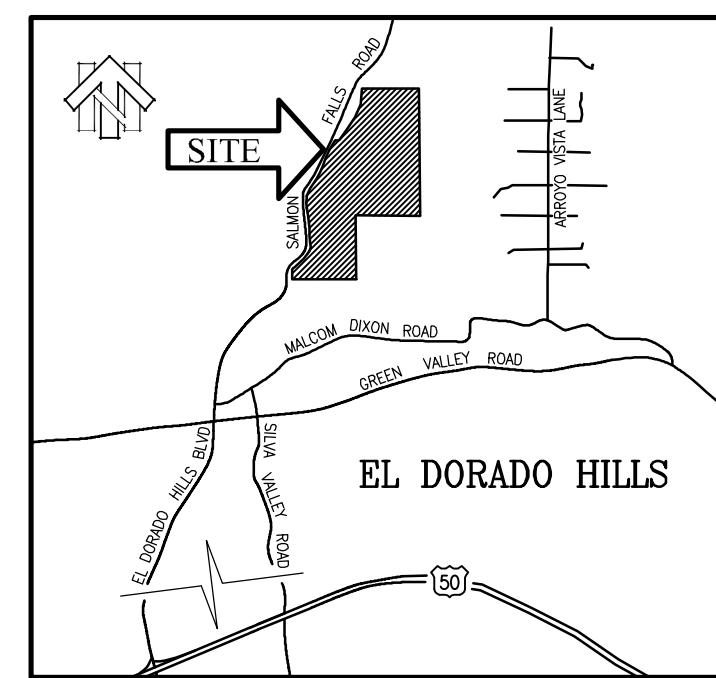
Exhibit I - Tree Preservation Plan - Numbered Tree Removal for Road Impacts

LA CANADA SECTIONS 14, 22 & 23., T.10N., R.8E., M.D.M. RS 16/101/1

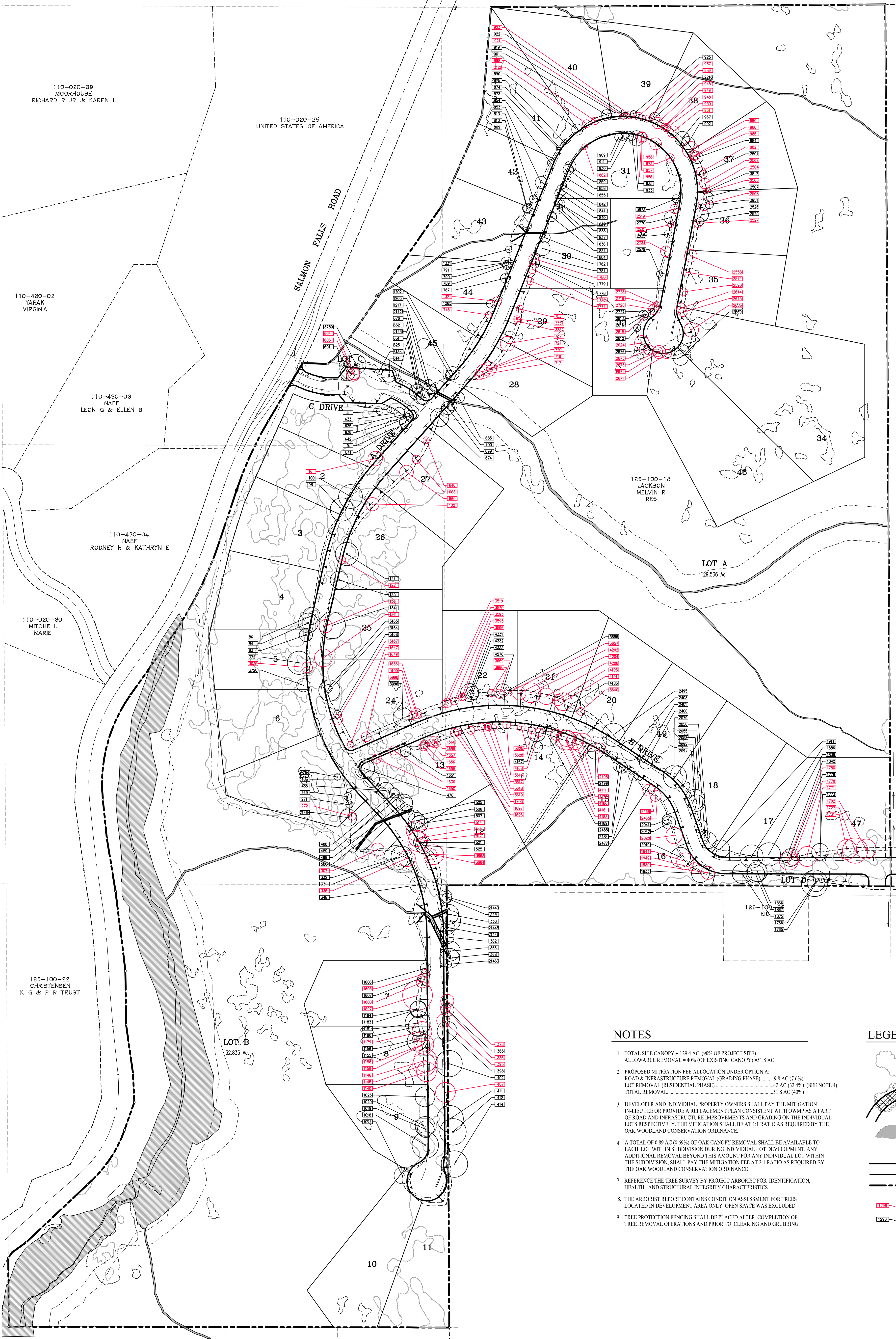
COUNTY OF EL DORADO

APRIL, 2008

STATE OF CALIFORNIA



SCALE: 1" = 100'



NOTES

- TOTAL SITE CANOPY = 129.4 AC (90% OF PROJECT SITE)
ALLOWABLE REMOVAL = 40% (OF EXISTING CANOPY) = 51.8 AC
- PROPOSED MITIGATION FEE ALLOCATION UNDER OPTION A:
ROAD & INFRASTRUCTURE REMOVAL (GRADING PHASE)..... 9.8 AC (7.6%)
LOT REMOVAL (RESIDENTIAL PHASE)..... 42 AC (32.4%) (SEE NOTE 4)
TOTAL REMOVAL..... 51.8 AC (40%)
- DEVELOPER AND INDIVIDUAL PROPERTY OWNERS SHALL PAY THE MITIGATION IN-LIEU FEE OR PROVIDE A REPLACEMENT PLAN CONSISTENT WITH OWMP AS A PART OF ROAD AND INFRASTRUCTURE IMPROVEMENTS AND GRADING ON THE INDIVIDUAL LOTS RESPECTIVELY. THE MITIGATION SHALL BE AT 1:1 RATIO AS REQUIRED BY THE OAK WOODLAND CONSERVATION ORDINANCE.
- A TOTAL OF 0.89 AC (0.69%) OF OAK CANOPY REMOVAL SHALL BE AVAILABLE TO EACH LOT WITHIN SUBDIVISION DURING INDIVIDUAL LOT DEVELOPMENT. ANY ADDITIONAL REMOVAL BEYOND THIS AMOUNT FOR ANY INDIVIDUAL LOT WITHIN THE SUBDIVISION, SHALL PAY THE MITIGATION FEE AT 2:1 RATIO AS REQUIRED BY THE OAK WOODLAND CONSERVATION ORDINANCE.
- REFERENCE THE TREE SURVEY BY PROJECT ARBORIST FOR IDENTIFICATION, HEALTH, AND STRUCTURAL INTEGRITY CHARACTERISTICS.
- THE ARBORIST REPORT CONTAINS CONDITION ASSESSMENT FOR TREES LOCATED IN DEVELOPMENT AREA ONLY. OPEN SPACE WAS EXCLUDED.
- TREE PROTECTION FENCING SHALL BE PLACED AFTER COMPLETION OF TREE REMOVAL OPERATIONS AND PRIOR TO CLEARING AND GRUBBING.

LEGEND

- EXISTING TREE CANOPY TO REMAIN
- EXISTING TREE CANOPY TO BE REMOVED PER GRADING PHASE
- EXISTING WETLANDS
- DAYLIGHT LINE
- RW
- LOT LINE
- PROPERTY LINE
- DRIP LINE RADIUS
- CANOPY TO BE REMOVED / TREE NUMBER (SEE ARBORIST REPORT)
- CANOPY TO REMAIN / TREE NUMBER (SEE ARBORIST REPORT)