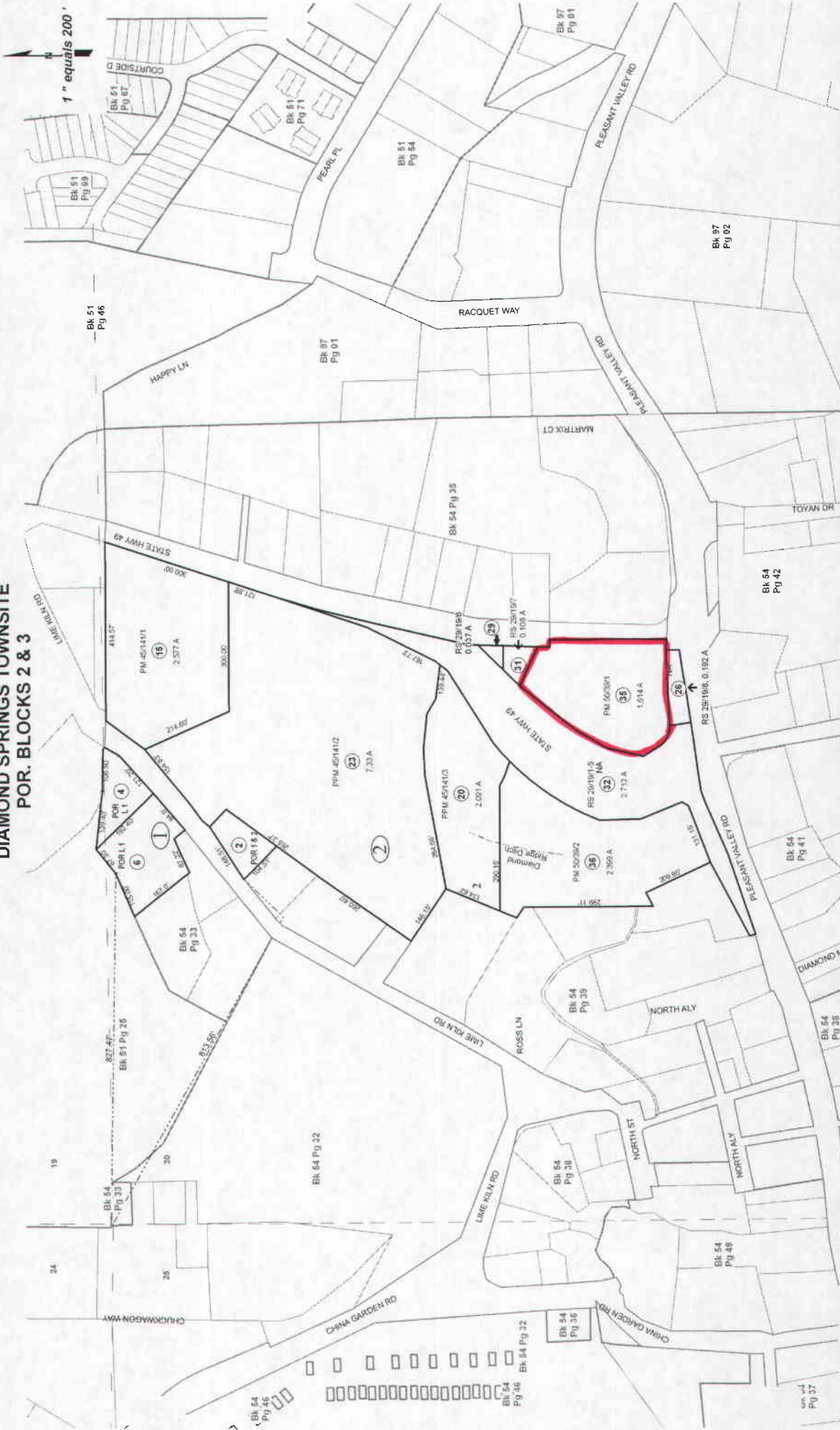


Case No. DR05-0005
Vicinity Map

EXHIBIT A

POR. NW1/4 SEC. 30, T.10N., R.11E., M.D.M.
DIAMOND SPRINGS TOWNSITE
POR. BLOCKS 2 & 3



Assessor's Map Bk. 054, Pg. 34
County of El Dorado, CA

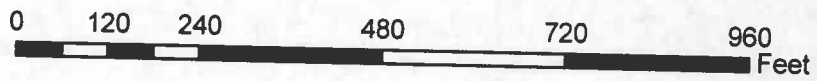
Rev2, Sept. 5, 2008

Assessor's Map Project Shows in Gray Text
Assessor's Block Numbers Shown in Ellipse
Assessor's Parcel Numbers Shown in Circle

Acreages Are Estimates

THIS MAP IS NOT A SURVEY. It is prepared by the El Dorado Co.
Assessor's office for assessment purposes only. Area calculations
are approximate and not guaranteed. Users should verify items
such as dimensions and acreage.

EXHIBIT B



Case No. DR05-0005
General Plan Land Use Map

EXHIBIT C



Case No. DR05-0005
Zoning Map

EXHIBIT D

EXHIBIT E

08 DEC -4 AM 10:46

RECEIVED
PLANNING DEPARTMENT



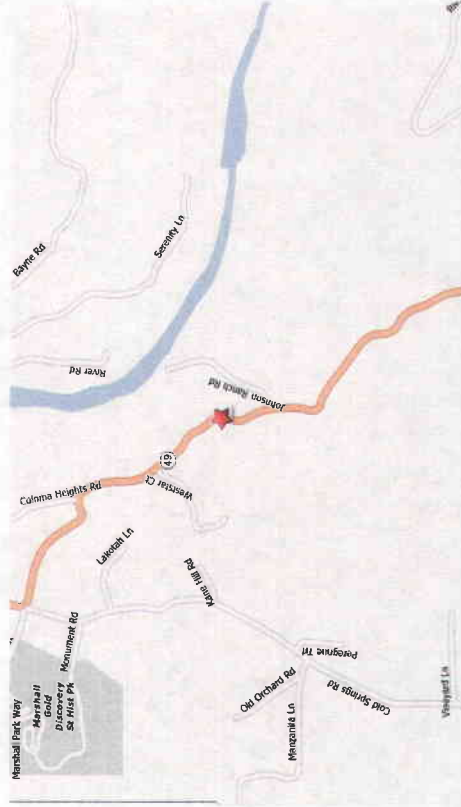
QuikStop
Quik Stop #161 - 613 Pleasant Valley Rd. Placerville, CA

superior
electrical & hvac design
1700 West Anaheim Street
Long Beach, California
90813-1195
Phone: 562.495.3908
Facsimile: 562.435.1867
www.superiorelectrical.com

Project:
QuikStop #161

Address:
613 Pleasant Valley Rd.
Placerville, CA

SIGN PROGRAM



① VICINITY MAP
NOT TO SCALE

Account Manager:
Mike Rathbun
Designer:
Rick Cardino 3.50
Scale: AS NOTED
Design No.: 08.11.1287.03
Date: 11.7.2008
Reg. No.:
Revisions:
R.1 11.17.2008 RC (2.00)
Add 3 sided monument option
R.2 11.17.2008 RC (2.00)
Add 3rd monument option
R.3 11.24.2008 RC (1.00)
Eliminate directional signs F & G

- APPROVALS -
FOR JOB CHECK
Acct. Mgr.
FOR CONSTRUCTION DATE
Acct. Mgr.
Design
Production
FOR INSTALL ONLY DATE
Acct. Mgr.

Page: 1 Of 13
This is a preliminary drawing. It is not to be used for construction without the approval of Superior Electrical-Advantech, Inc. It is to be used for informational purposes only. It is to be reproduced, copied or published in any form without the written consent of Superior Electrical-Advantech, Inc. The design of colors, sizes, materials and dimensions are subject to change without notice. Superior Electrical-Advantech, Inc. is not responsible for any errors or omissions. The design is the property of Superior Electrical-Advantech, Inc. All rights reserved. © SEA 2008
Note: The Colors depicted here are a guide. Colors may vary. See color specifications.

S 09-0001



Superior
 signs & graphics
 1700 West Anaheim Street
 Long Beach, California
 90813-1195
 Phone: 562.495.3808
 Facsimile: 562.435.1967
 www.superiorsigns.com

Project:
QuickStop #161

Address:
 613 Pleasant Valley Rd.
 Placentia, CA

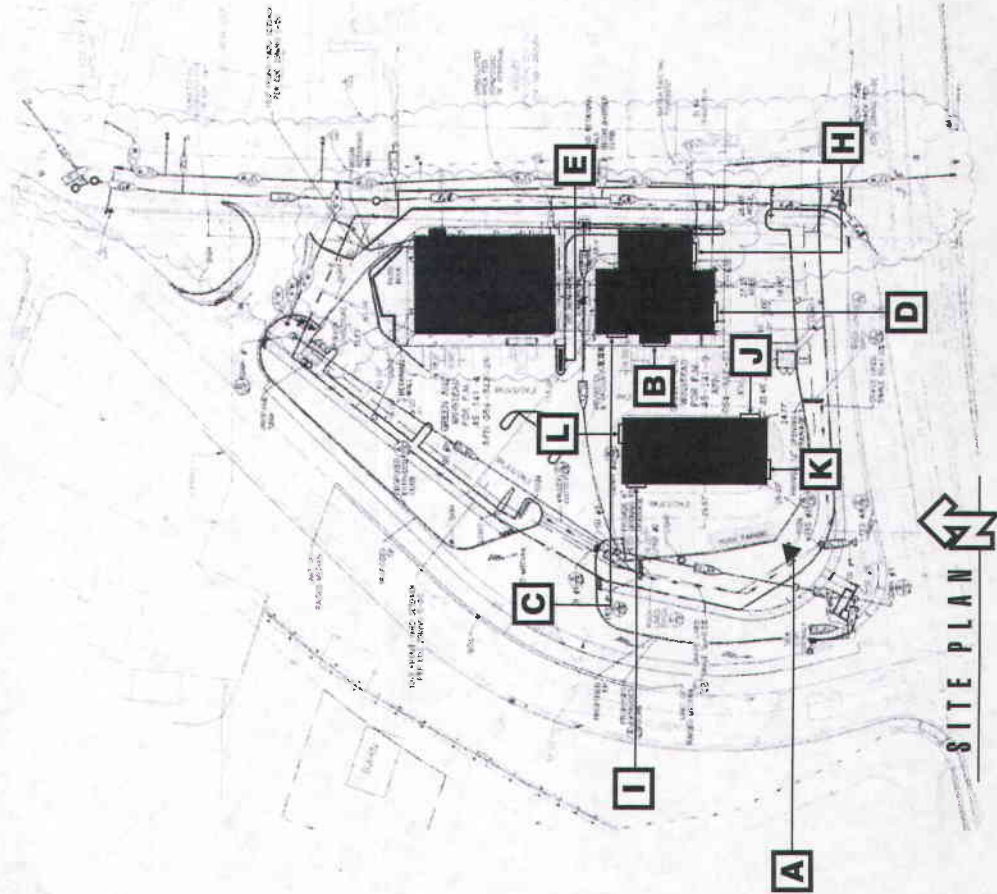
Account Manager:
 Mike Rathbun
 Designer:
 Rick Cardino 3.50
 Scale: AS NOTED
 Design No.: 08.11.1287.03
 Date: 11.7.2008
 Reg. No.:
 Revisions:
 R.1 11.17.2008 RC (2.00)
 Add 3 sided monument option
 R.2 11.17.2008 RC (2.00)
 Add 3rd monument option
 R.3 11.24.2008 RC (1.00)
 Eliminate directional signs F & G

APPROVALS
 FOR JOB CHECK
 Acc. Mgr.
 FOR CONSTRUCTION DATE
 Acc. Mgr.
 Design
 Production
 FOR INSTALL ONLY DATE
 Acc. Mgr.

Page: 2 Of: 13

This is an optional residential energy certificate by Superior Electrical Advertising, Inc. It is submitted for your approval. It is not to be taken as a warranty, guarantee, or endorsement of any product or service. The company of origin, the manufacturer or distributor, is responsible for the accuracy of the information. This company is not responsible for the design or construction of the sign. The design is the property of Superior Electrical Advertising, Inc. © SEA 2008
 Note: The colors displayed here are a graphic representation of the actual colors used. Colors may vary. See color specifications.

A QuickStop Price Sign	50 SQ FT
B QuickStop Letters & Logo One (1) Set	41.6 SQ FT
C CARWASH Letters One (1) Set	26 SQ FT
D CARWASH Letters One (1) Set	26 SQ FT
TOTAL SQ FT BUILDING SIGNS	93.6 SQ FT
E 4' x 8' Menuboard	15.35 SQ FT
H EXIT ONLY Directional Letters	15.35 SQ FT
I VINYL GRAPHICS	15.35 SQ FT
J VINYL GRAPHICS	15.35 SQ FT
K VINYL GRAPHICS	15.35 SQ FT
L VINYL GRAPHICS	15.35 SQ FT
TOTAL SQ FT CANOPY GRAPHICS	61.4 SQ FT





SUPERIOR
electrical advertising

1700 West Anaheim Street
Long Beach, California
90813-1195
Phone: 562-495-3608
Facsimile: 562-435-1867
www.superioradns.com

Project:
QuikStop #161

Address:
613 Pleasant Valley Rd.
Pleasantville, CA

Account Manager:
Mike Rathbun
Designer:
Rick Cardinlo 3.50
Scale: AS NOTED
Design No.: 08-11-1287.03
Date: 11.7.2008
Reg. No.:

Revisions:
R.1 11.17.2008 RC (2.00)
Add 3 sided monument option
R.2 11.17.2008 RC (2.00)
Add 3rd monument option
R.3 11.24.2008 RC (1.00)
Eliminate directional signs F & G

APPROVALS
FOR JOB CHECK
Acct. Mgr.
FOR CONSTRUCTION DATE
Acct. Mgr.
Design
Production
FOR INSTALL ONLY DATE
Acct. Mgr.

Page: 4.A of 13
This is an official copyrighted drawing created by Superior Electrical Advertising, Inc. It is submitted for your approval. It is not to be altered, modified, or reproduced in any way without the express written consent of Superior Electrical Advertising, Inc. The change of colors, sizes, materials, or dimensions of this design is solely by Superior Electrical Advertising, Inc. and shall be subject to the design in any other drawings. This drawing was written from Superior Electrical Advertising, Inc. © SEA 2008
Note: The Colors depicted here are a guide. See color specifications.



PLAN VIEW
SCALE: 1/2" = 1'

MONUMENT SIGNAGE
QUANTITY: ONE (1) 3 SIDED MONUMENT
SCALE: 1/2" = 1'



1700 West Anaheim Street
Long Beach, California
90813-1195
Phone: 562.465.3838
Facsimile: 562.435.1887
www.superiorsigns.com

Project:
QuikStop #161

Address:
613 Pleasant Valley Rd.
Pacerville, CA

Account Manager:
Mike Rathbun
Designer:
Rick Cardinlo 3.50
Scale: **AS NOTED**

Design No.: **08.11.1287.03**
Date: **11.7.2008**
Reg. No.:

Revisions:
R.1.11.2008 RC (2.00)
Add 3 sided monument option
R.2.11.2008 RC (2.00)
Add 3rd monument option
R.3.11.24.2008 RC (1.00)
Eliminate directional signs F & G

• APPROVALS •
FOR JOB CHECK
Acct. Mgr.

FOR CONSTRUCTION DATE
Acct. Mgr.

Production
FOR INSTALL ONLY DATE
Acct. Mgr.

Page: 4 Of 13

This is an original unapproved drawing created by Superior Signs and is not to be reproduced or used for any other project without the express written consent of Superior Signs. The drawing of colors, sizes, materials and dimensions are subject to change without notice. Consultation with Superior Signs is required for any changes. © SEA 2008
Note: The Colors depicted here are a graphic representation. Actual colors may vary slightly upon application.

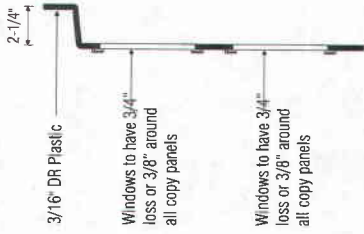


② PRICE SIGN ELEVATION
SCALE: 1/2" = 1'-0"

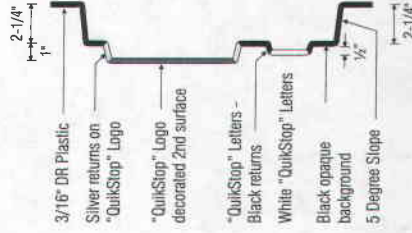
SPECIFICATIONS

Retainers: Fabricate aluminum retainers painted satin black
Background: 3/16" DR Plastic painted 2nd surface black
Price Numbers: DR plastic panels w/2nd surface black background & clear numbers
Product Panels: DR plastic panels w/2nd surface black background & clear copy

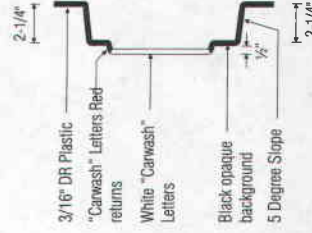
NOTE: ALL COLORS TO BE DECORATED 2ND SURFACE



④ SECTION VIEW - NUMBER PANELS



⑤ SECTION VIEW - QUIKSTOP LOGO



⑥ SECTION VIEW - CARWASH LETTERS