

A graphic illustration on the left side of the page. At the top, a large green recycling symbol (three chasing arrows) is set against a blue background. Below it, a yellow and orange shape represents a business or a piece of waste. In the foreground, a clear plastic bottle with a green outline is shown. The background is a mix of blue, yellow, and brown tones.

WHAT YOU NEED TO KNOW ABOUT

BUSINESS RECYCLING

Why recycle?

- **State law now requires all businesses that generate 4 or more cubic yards of waste weekly to recycle.**
- Recycling may provide opportunities for your business to save money.
- Recycling helps conserve resources and extends the life of California's landfills. It also helps create a healthy environment for our community and future generations.

How to get started

It's easy to recycle at your business.

- Make sure your business has arranged for recycling services (see below for more information).
- Use the list on the other side of this flyer to help employees learn what items can be recycled.
- Separate recyclable items from trash inside your business.
- Place your recyclable items in external recycling containers for collection.
- **Note:** Any business or individual may donate, sell and/or otherwise arrange for the pickup of recyclable materials.

Where to go for more information

**El Dorado County
Community Development Agency
Environmental Management Division
Solid Waste Program at (530) 621-5300.**

Visit <http://www.edcgov.us/SolidWaste/>

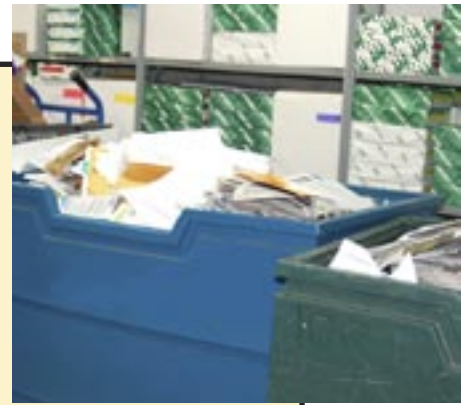
For additional general information about recycling and waste reduction, visit the California Department of Resources Recycling and Recovery (CalRecycle) at www.calrecycle.ca.gov.



Types of material to recycle



- Clean, dry paper
- Cardboard and chipboard
- Plastic and glass bottles and jars
- Metal and aluminum cans
- Metal containers and empty aerosol cans
- Plastic bags and dry cleaners bags, bundled



Don't put in recycling bin



- Broken glass
- Contaminated or wet paper
- Plastic hangers
- Rubber tires
- Hazardous waste — paint, batteries, antifreeze, pesticides, cleaning products, appliances, cell phones, TVs, computer monitors
- Do not place rubber tires or hazardous waste in recycling bins. For information on proper disposal or recycling of these materials, see <http://www.edcgov.us/HazardousMaterials/>



El Dorado County, Community Development Agency, Environmental Management Division is committed to keeping our communities beautiful. Please check our website (<http://www.edcgov.us/EMD/>) regularly and follow us on Facebook (<https://www.facebook.com/EDCEnvMgmt>) to learn about all our programs.