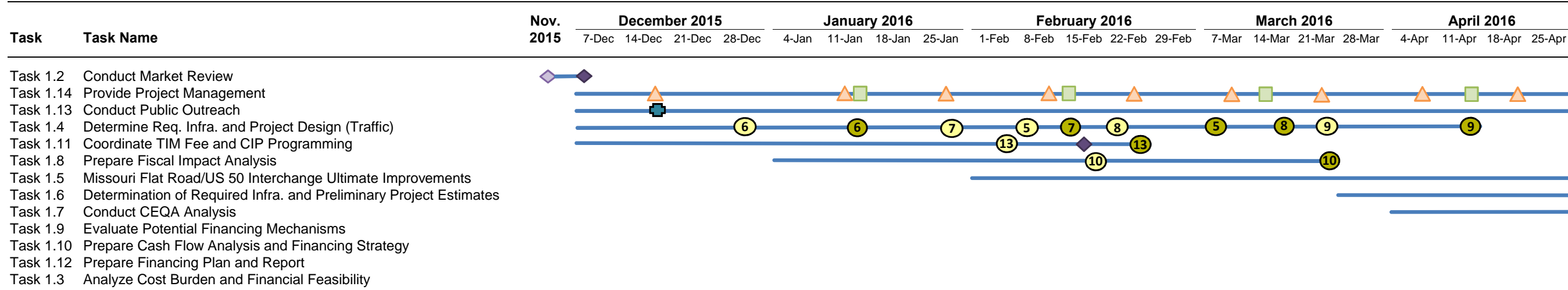


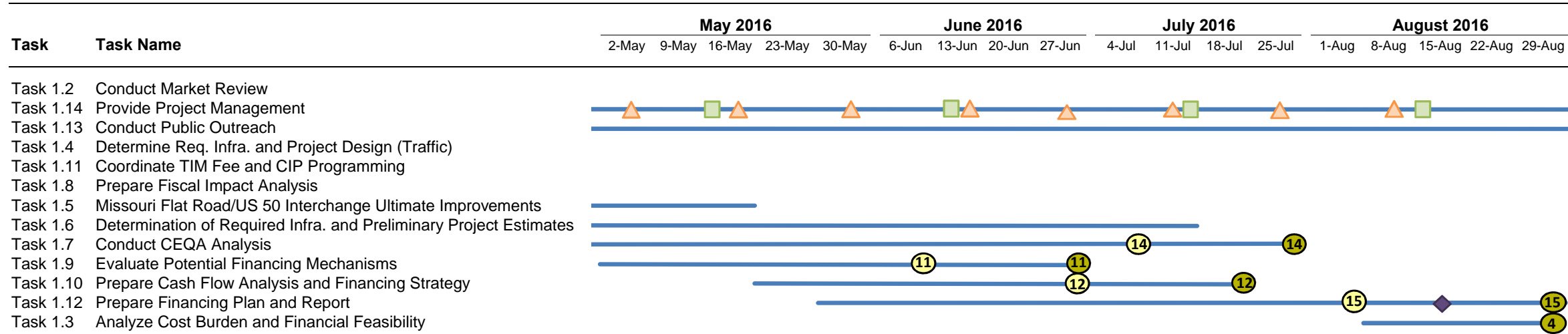
**Table 1**  
**MC&FP Phase II Preliminary Project Schedule**  
**Remaining MC&FP Phase II Tasks to be Authorized**



Icon	Description	Dates			
	Project Status Conference Calls	Bi-Weekly (Every Thursday starting 12/17, except 12/31)			
	Monthly Invoices/Progress Reports	Monthly (Approximately every 15th of the month)			
	BOS PowerPoint				
	BOS Presentation				
	<b>Public Outreach Deliverables</b>	<b>Task</b>	<b>Consultant</b>	<b>Draft</b>	<b>Final</b>
	1) Communications Plan	1.13	Flint	completed	Dec 2015
	2) Initial Project Website	1.13	Flint	completed	Dec 2015
	3) FAQ Project Overview	1.13	Flint	completed	Dec 2015
	4) Stakeholder List	1.13	Flint	- ongoing -	
	5) eBlast Format	1.13	Flint	completed	Dec 2015
	6) BOS Study Sessions (7)	1.13	Flint	N/A	TBD
	7) Planning Commission Presentation (1)	1.13	Flint	N/A	TBD
	8) Stakeholder Presentations/Mini-Workshops (6)	1.13	Flint	N/A	TBD
	9) Public Workshops (2)	1.13	Flint	N/A	TBD
	10) Outreach Summary Report	1.13	Flint	N/A	TBD
	<b>Draft/Final Deliverables</b>			<b>Draft</b>	<b>Final</b>
	1) Tech Memo 1-1: Data & Reports Req. for Project	1.1	EPS	completed	completed
	2) Tech Memo 1-2: Project Kick-Off Summary	1.1	EPS	completed	completed
	3) Tech Memo 1-3: Market Assessment	1.2	EPS	completed	completed
	4) Tech Memo 1-4: Cost Burden Analysis	1.3	EPS	completed	incl. in FP
	5) Tech Memo 1-5: Study Area, Anlys. Methodology, Procedures & Assump.	1.4	K&Q	2/8/2016	3/7/2016
	6) Tech Memo 1-6: Existing Traffic Analysis Results and Findings	1.4	K&Q	12/30/2015	1/15/2016
	7) Project Description	1.7	Ascent	1/29/2016	2/15/2016
	8) Tech Memo 1-7: Future Traffic Analysis Results and Findings	1.4	K&Q	2/22/2016	3/18/2016
	9) Tech Memo 1-8: Capacity Threshold Phasing Anlys. and Alt. Screening Eval.	1.4	K&Q	3/25/2016	4/15/2016
	10) Tech Memo 1-9: Summary of the Net Fiscal Impact Results of the Project	1.8	EPS	2/19/2016	3/25/2016
	11) Tech Memo 1-10: Financing Plan Assumptions and Approach	1.9	EPS	6/10/2016	7/1/2016
	12) Tech Memo 1-11: Cash Flow Analysis and Draft Financing Strategy	1.10	EPS	7/1/2016	7/22/2016
	13) Tech Memo 1-12: Required Infra. Funding and Prelim. Project Design	1.11	K&Q	2/5/2016	2/26/2016
	14) CEQA Initial Study	1.7	Ascent	7/8/2016	7/29/2016
	15) Financing Plan	1.12	EPS	8/5/2016	9/2/2016

**NOTE: This is a preliminary draft schedule. Timing of tasks and deliverables are subject to change based on authorization of tasks at the 12/7/15 Board of Supervisors meeting and consultant team discussions with County staff following the meeting.**

**Table 1**  
**MC&FP Phase II Preliminary Project Schedule**  
**Remaining MC&FP Phase II Tasks to be Authorized**



Icon	Description	Dates			
	Project Status Conference Calls	Bi-Weekly (Every Thursday starting 12/17, except 12/31)			
	Monthly Invoices/Progress Reports	Monthly (Approximately every 15th of the month)			
	BOS PowerPoint				
	BOS Presentation				
	<b>Public Outreach Deliverables</b>	<b>Task</b>	<b>Consultant</b>	<b>Draft</b>	<b>Final</b>
	1) Communications Plan	1.13	Flint	completed	Dec 2015
	2) Initial Project Website	1.13	Flint	completed	Dec 2015
	3) FAQ Project Overview	1.13	Flint	completed	Dec 2015
	4) Stakeholder List	1.13	Flint	- ongoing -	
	5) eBlast Format	1.13	Flint	completed	Dec 2015
	6) BOS Study Sessions (7)	1.13	Flint	N/A	TBD
	7) Planning Commission Presentation (1)	1.13	Flint	N/A	TBD
	8) Stakeholder Presentations/Mini-Workshops (6)	1.13	Flint	N/A	TBD
	9) Public Workshops (2)	1.13	Flint	N/A	TBD
	10) Outreach Summary Report	1.13	Flint	N/A	TBD
	<b>Draft/Final Deliverables</b>			<b>Draft</b>	<b>Final</b>
	1) Tech Memo 1-1: Data & Reports Req. for Project	1.1	EPS	completed	completed
	2) Tech Memo 1-2: Project Kick-Off Summary	1.1	EPS	completed	completed
	3) Tech Memo 1-3: Market Assessment	1.2	EPS	completed	completed
	4) Tech Memo 1-4: Cost Burden Analysis	1.3	EPS	completed	incl. in FP
	5) Tech Memo 1-5: Study Area, Anlys. Methodology, Procedures & Assump.	1.4	K&Q	2/8/2016	3/7/2016
	6) Tech Memo 1-6: Existing Traffic Analysis Results and Findings	1.4	K&Q	2/15/2016	3/14/2016
	7) Project Description	1.7	Ascent	2/19/2016	4/1/2016
	8) Tech Memo 1-7: Future Traffic Analysis Results and Findings	1.4	K&Q	2/22/2016	3/21/2016
	9) Tech Memo 1-8: Capacity Threshold Phasing Anlys. and Alt. Screening Eval.	1.4	K&Q	2/29/2016	3/28/2016
	10) Tech Memo 1-9: Summary of the Net Fiscal Impact Results of the Project	1.8	EPS	1/22/2016	2/19/2016
	11) Tech Memo 1-10: Financing Plan Assumptions and Approach	1.9	EPS	6/10/2016	7/1/2016
	12) Tech Memo 1-11: Cash Flow Analysis and Draft Financing Strategy	1.10	EPS	7/1/2016	7/22/2016
	13) Tech Memo 1-12: Required Infra. Funding and Prelim. Project Design	1.11	K&Q	2/5/2016	2/26/2016
	14) CEQA Initial Study	1.7	Ascent	7/8/2016	7/29/2016
	15) Financing Plan	1.12	EPS	8/5/2016	9/2/2016

**NOTE: This is a preliminary draft schedule. Timing of tasks and deliverables are subject to change based on authorization of tasks at the 12/7/15 Board of Supervisors meeting and consultant team discussions with County staff following the meeting.**

sched