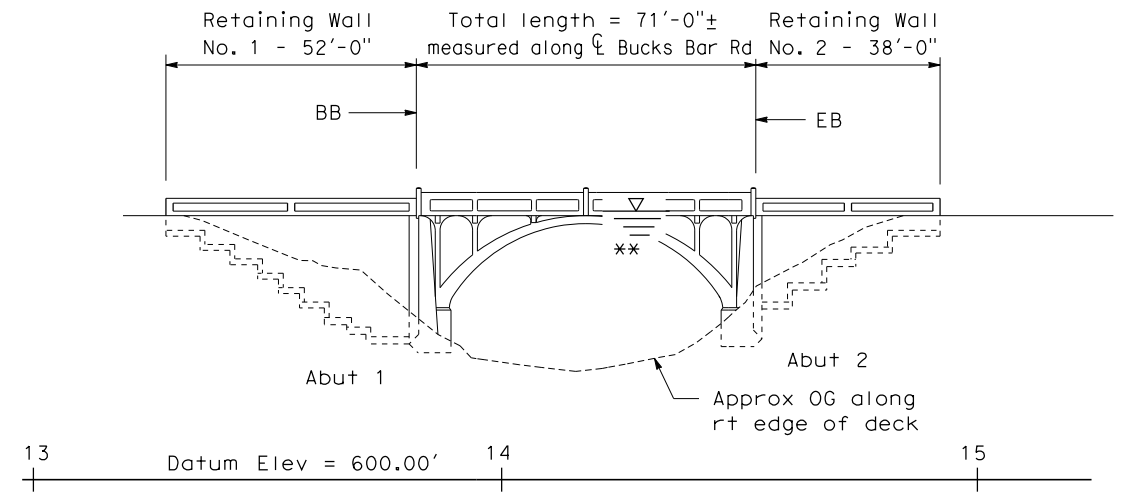


DIST.	COUNTY	ROUTE	POST MILES TOTAL PROJECT
03	ED	Local	N/A

El Dorado County  
Department of Transportation  
4505 Golden Foothill Parkway  
El Dorado Hills, CA 95762

Dokken Engineering  
2365 Iron Point Rd, Suite 200  
Folsom, Ca 95630

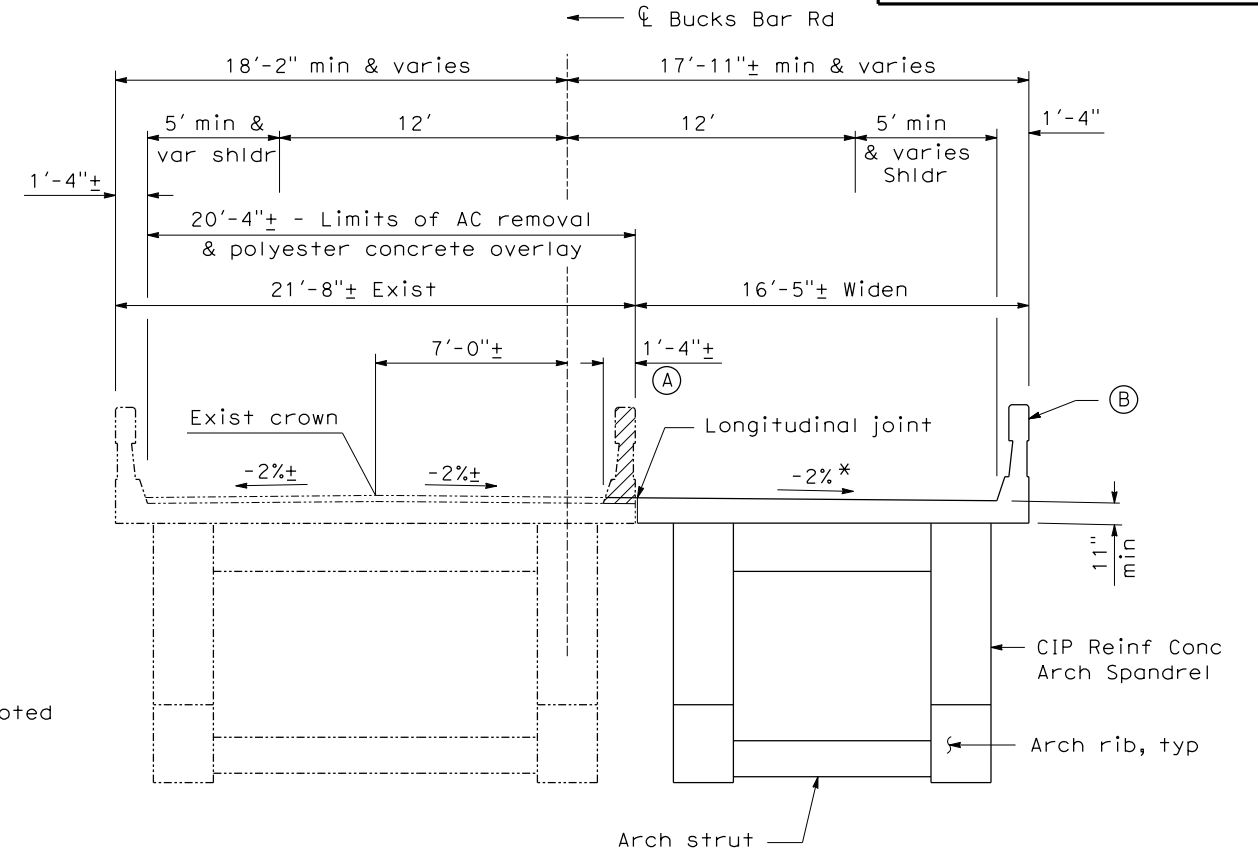


**ELEVATION**

1" = 10'

Assume spread footings on drill & bond rock dowels

\*\*100 year WSE = 1655.97'

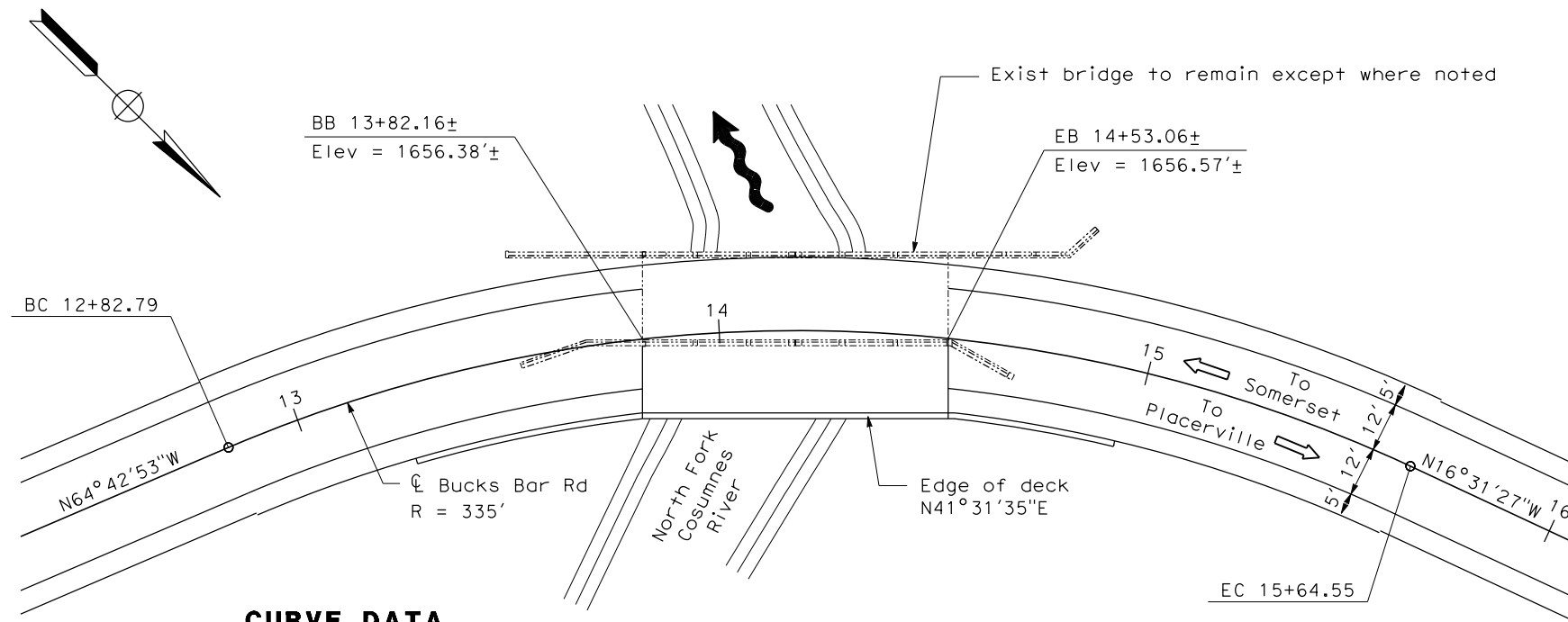


**TYPICAL SECTION**

1/4" = 1'-0"

\*Match exist cross slope & profile grade

Date of estimate	=	9-14-09
Structure depth	=	11" min & varies
Length	=	71'-0"
Width	=	16'-5"±
Area	=	1136 sq ft
Approach embankment & roadway retrofit	=	\$201,000
Cost/□ ft including 10% mobilization & 25% contingency	=	\$773.77
Bridge removal (portion)	=	\$20,000
<b>Total Cost</b>	=	<b>\$1,100,000</b>



**CURVE DATA**

R = 335.00'  
Δ = 48°11'25"  
T = 149.82'  
L = 281.76'

**PLAN**

1" = 10'

**LEGEND**

- (A) Limits of refinish bridge deck
- (B) Concrete Barrier (Mod)
- Denotes exist structure
- ▨ Denotes limits of Bridge Removal (Portion)

DESIGNED BY	K. Sorokina	DATE	9-14-09
DRAWN BY	C. Houghton	DATE	9-14-09
CHECKED BY	J. Bishop	DATE	9-14-09
APPROVED		DATE	

*John Bishop*  
PROJECT ENGINEER

**ALTERNATIVE 1**

**PLANNING STUDY**

**BUCKS BAR ROAD BRIDGE (WIDEN)**

BRIDGE NO. 25C-0003	CU N/A
SCALE: AS NOTED	EA N/A

DESIGN OVERSIGHT	
SIGN OFF DATE	