

Remember to include the following in your plans and kit:

Pets & Animals

- Get your pets microchipped
- Ensure they have a metal identification tag
- Have animals trained to get into trailers, crates, or other transportation equipment
- Keep extra leashes, waste bags, medication, food, and litter

Infants and Children

- Remember to include infant formula/food, diapers, clothing, security items (pacifiers, stuffed animal, blanket)
- Include a few toys, games, and books in your emergency kit to entertain children
- Identify a caregiver to pick up and take care of your children in case you cannot get to their location

Special Medical Needs

- Identify back-up electricity sources for electricity dependent medical equipment.
- Keep a list of medications and dosages with your emergency kit
- Train another person to use any equipment that you may need help with

For More Information Visit:

El Dorado County Emergency Preparedness and Response

www.edcgov.us/preparedness

Find Us On Social Media: EDCPreparedness



El Dorado County Animal Services

www.edcgov.us/animalservices

Ready.gov

www.ready.gov



Emergency Preparedness and Response is a program of the El Dorado County Health and Human Services Agency

El Dorado County
Emergency Preparedness and Response
2900 Fair Lane Court
Placerville, CA
(530) 621-7581

December 2016

Be Prepared



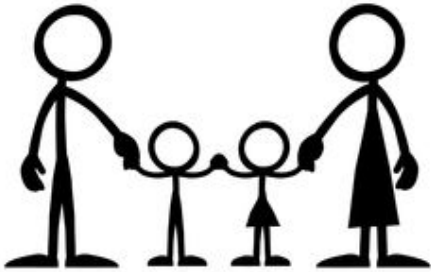
Building Disaster Resilient Communities Starts with YOU!

**El Dorado County
Emergency Preparedness
& Response**

Develop a Personal Support Network

Friends, family, and neighbors will likely be your “first responders.” Be sure to include them in your emergency planning.

- Introduce your support network to your pets
- Show friends, family, and neighbors where you keep your emergency supplies and how to use any special equipment that you may have

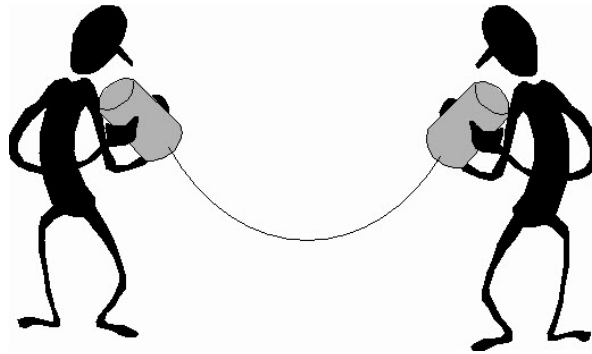


Develop a Family Emergency Plan

- Identify a reunification location to meet up with your family if separated
- Have a plan for your children, those with special medical needs, elderly family members and pets



Make a Kit

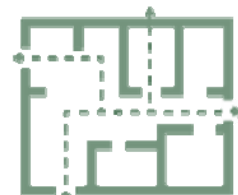


Develop a Communications Plan

- Identify important emergency numbers and information and store it in easy to find locations
- Identify an out of town contact
- Practice different ways to communicate, including text messages
- Include your personal support network

Develop an Evacuation Plan

- Learn your neighborhoods
- Identify at least two ways out of the areas you spend your time and practice driving those routes in different conditions—day, night, rain, snow, etc.
- Be prepared to shelter in place if instructed to do so



Have a Plan

Make an Emergency Kit

- Prepare emergency kits to keep at your home and workplace, in your car
- Include items for pets, children, special medical needs, and copies of important documents
- Include essentials like:
 - ⇒ Water
 - ⇒ Food (remember infants, children, and pets)
 - ⇒ Clothes
 - ⇒ Medications
 - ⇒ Flashlight and extra batteries
 - ⇒ Can opener
 - ⇒ Radio
 - ⇒ Hygiene supplies
 - ⇒ First aid supplies

Practice! Practice! Practice!

- Practice putting everything into your car to evacuate, including your pets
- Practice meeting at your family reunification location
- Practice your family communications plan



Be Informed