



## North Tahoe and Meeks Bay Fire Protection Districts

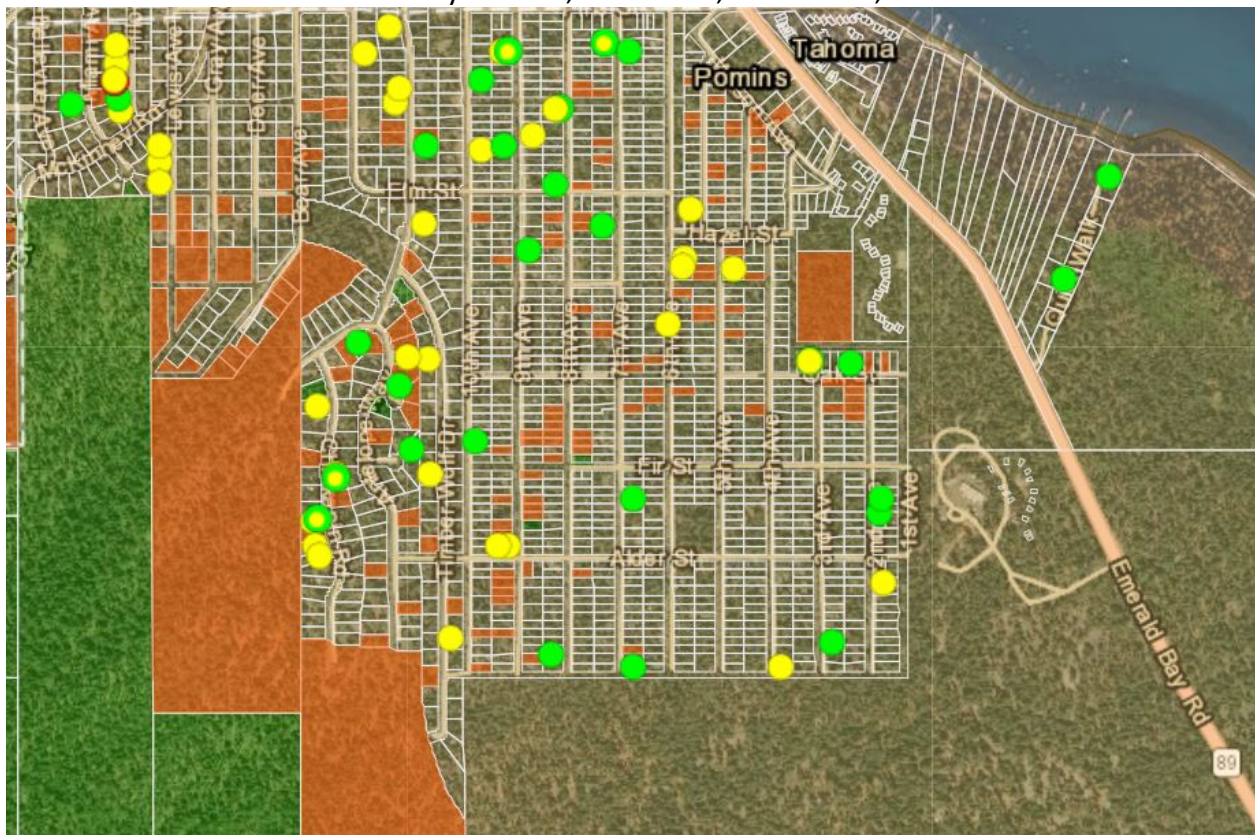


# El Dorado County Vegetation Management Ordinance Community Emphasis Areas

North Tahoe and Meeks Bay Fire Protection Districts (Districts) have set the Tahoma and Glenridge Communities as their target hazard areas/community emphasis areas within El Dorado County to inspect for defensible space compliance through the Tahoe Network of Fire Adapted Communities (TNFAC) program as well as through the Vegetation Management Ordinance. The Districts plan to increase public awareness and compliance with defensible space through TNFAC-funded: inspections, outreach, education, and provide community assistance where applicable. The Districts intend to inspect and notice in accordance with the Vegetation Management Ordinance as Inspection Officials in order to gain compliance on grossly noncompliant developed and undeveloped parcels where the property owners are non-responsive and fire hazards persist.

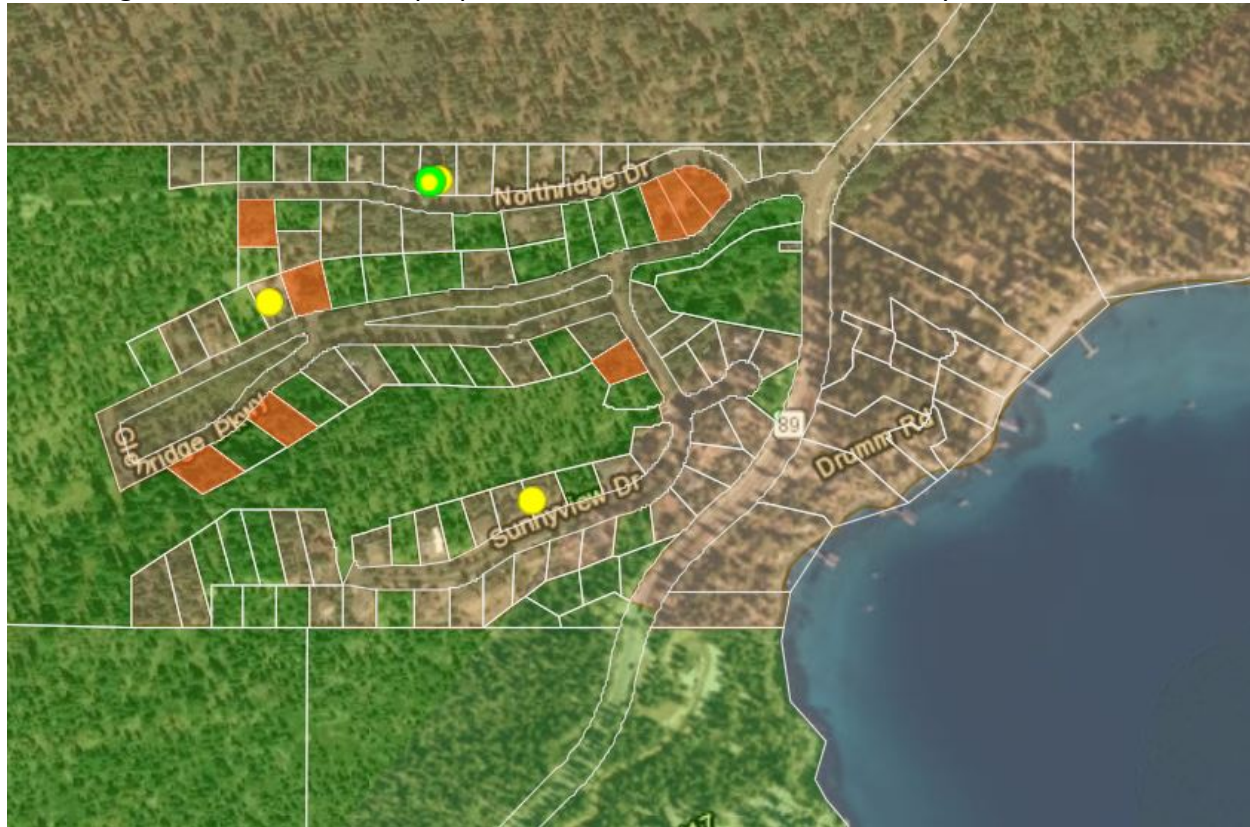
### Tahoma:

The Tahoma Community located on the Placer and El Dorado County line in West Lake Tahoe and is accessed from SR89 via Gray Avenue, Elm Street, Pine Street, and Wilson Avenue



**Glenridge:**

The Glenridge Community is located in West Lake Tahoe accessed from SR89 via Northridge Drive as well as the properties located east of the community on Drum Road.



Please contact me directly with any questions.

Thank you,



**Eric Horntvedt**  
**Forest Fuels Coordinator**  
Office: [530-584-2344](tel:530-584-2344) Cell: [530-492-1242](tel:530-492-1242)  
Email: [horntvedt@ntfire.net](mailto:horntvedt@ntfire.net)  
**North Tahoe Fire Protection District**  
[ntfire.net](http://ntfire.net) | [Like us on Facebook](#)