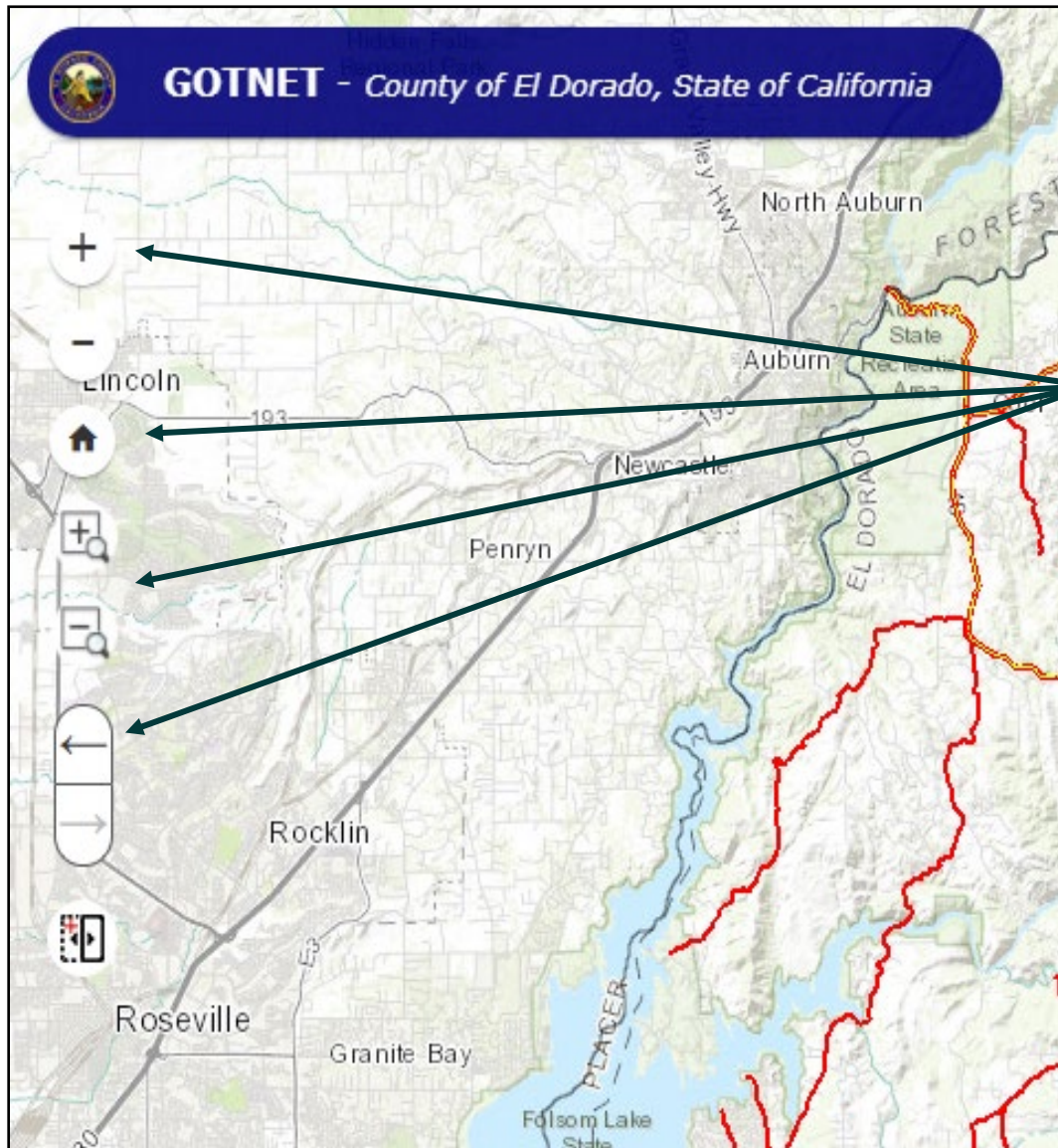


## General Overview:



### PANNING

Click and hold on the map to move freely around to your area of interest.

A multi-directional arrow should appear.

### ZOOM FEATURES

**In/Out:** Using the +/- sign will allow you to zoom in and out on specific areas of the map. You may zoom as far in or out as needed.

**Home Extent:** Click the Home button to return to the original extent of the map (a full view of El Dorado County).

**By Selection:** By toggling on/off this tool, you can more precisely select a specific study area.

With the selection tool on, click and hold in the upper corner of whatever area you'd like to zoom in/out on.

Once you're to the desired extent, be sure to click the selected tool again to toggle off before proceeding.

**Next Extent:** Zoom to previous extent or zoom to the next extent.



### SWIPE

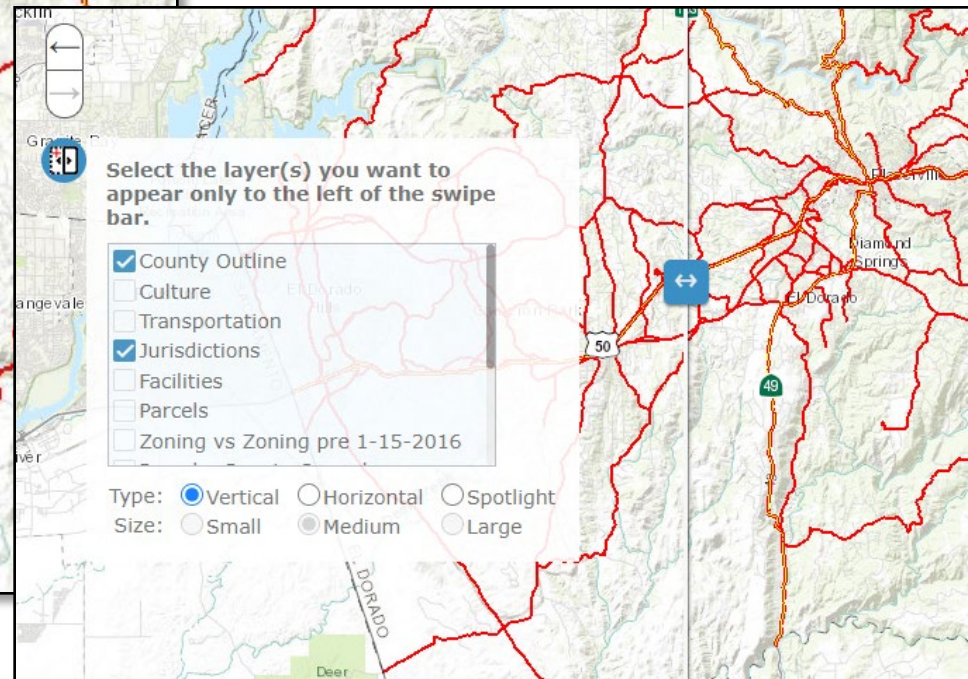
Enables you to easily compare the content of different layers on a map. (Layers must be active)

Vertical bar—Slide the swipe tool left and right.

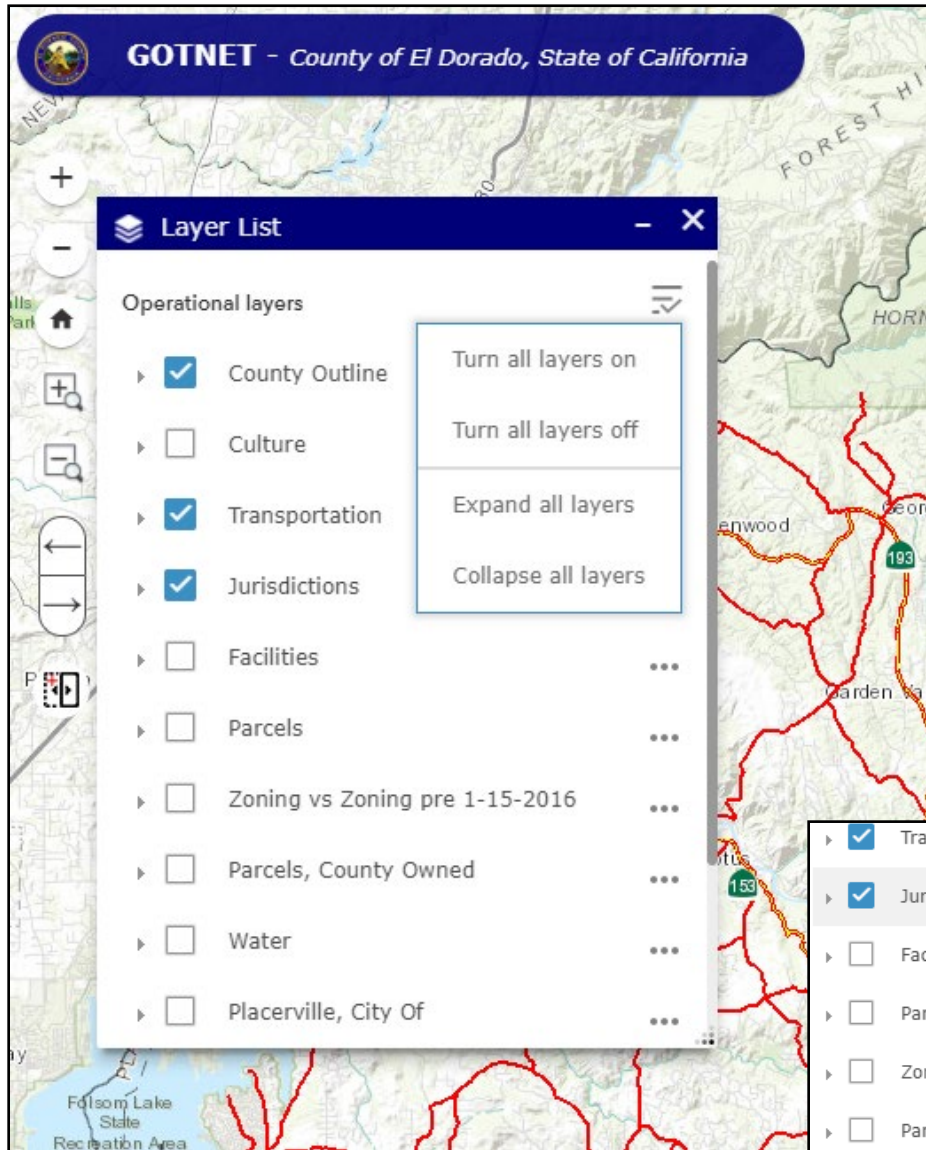
Horizontal bar—Slide the swipe tool up and down.

Spyglass—Drag the spyglass around the map. The content of the layer you want to swipe shows within the spyglass.

You can slide the swipe tool or move the mouse around to reveal the content of another layer.



# Layers List



## OPERATIONAL LAYERS



The Layer List widget provides a list of operational layers and their symbols.

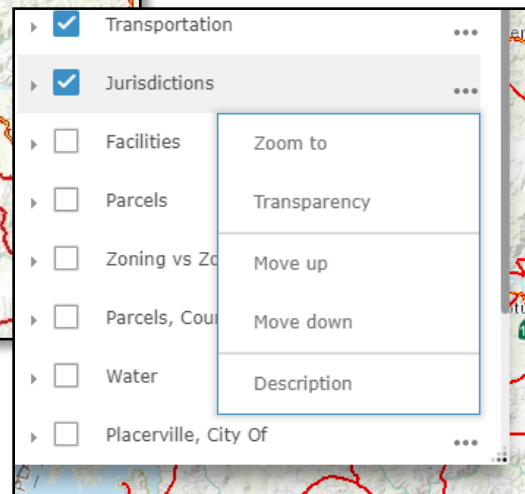
It allows you to turn individual layers on and off. Each layer in the list has a check box that allows you to control its visibility.

Some layers contain sublayers or subtypes. It is important to remember the Super Layer Heading must be selected for any sublayer to be active.

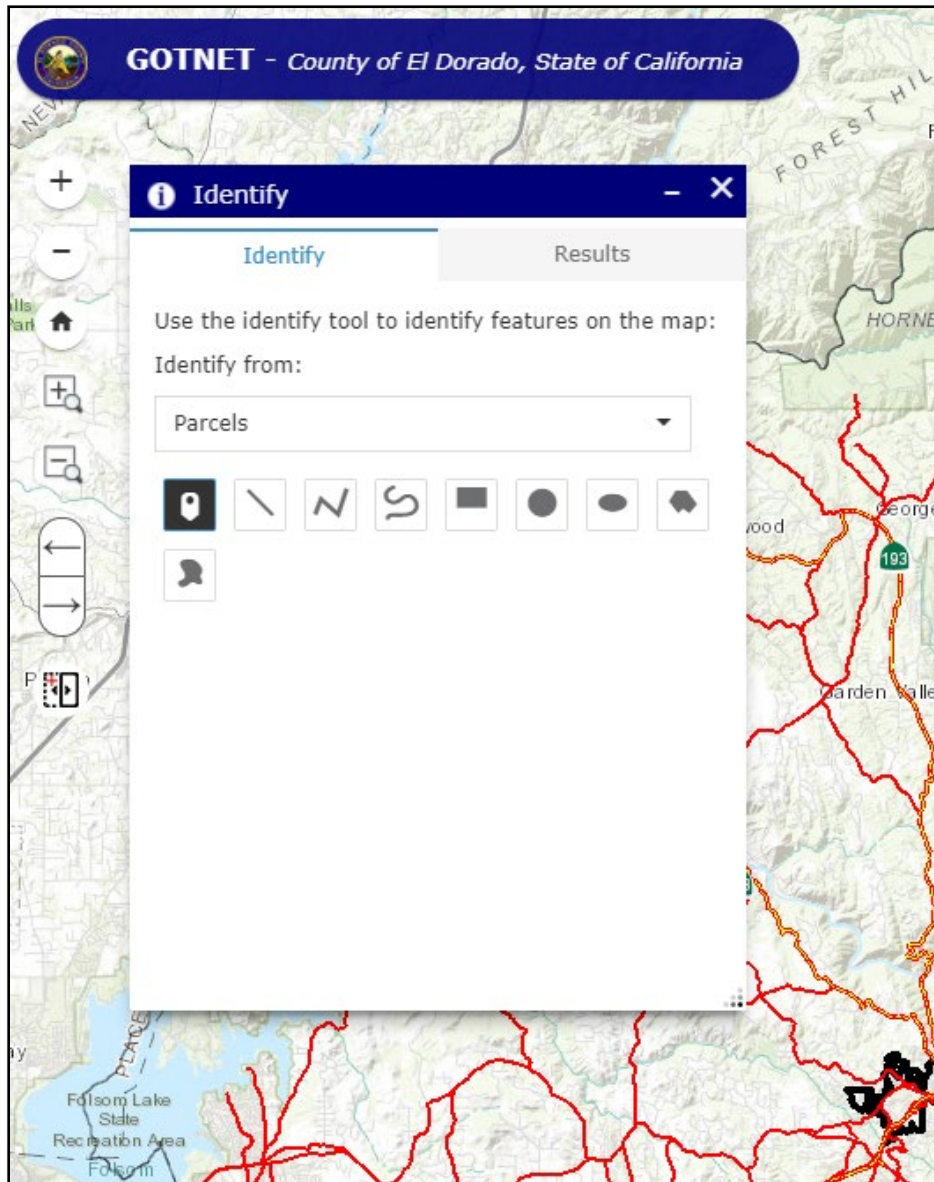
The order in which layers appear in this widget corresponds to the layer order in the map.

By clicking on the ellipsis, it provides further functionality related to the specific layer.

You are able to change the order of layers in the map, zoom to a specific layer on the map or adjust the transparency.



# Identify



## IDENTIFY

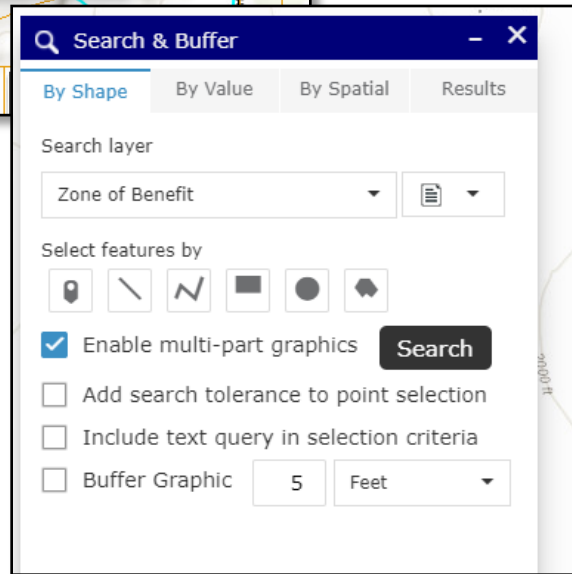
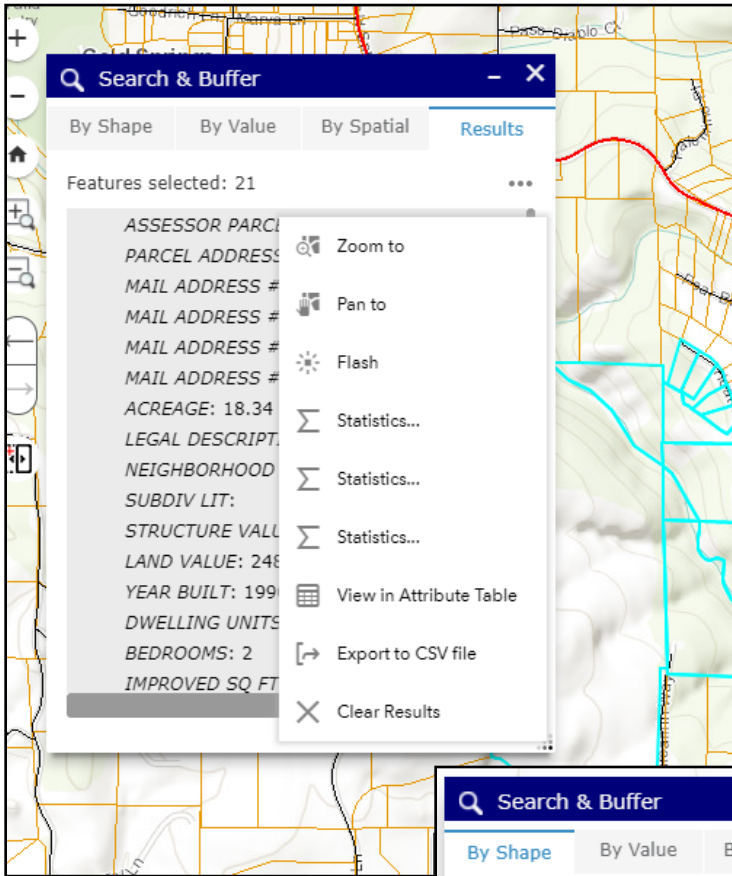
The Identify widget can retrieve information from the selected layer based on a selected location.



Layers must be active in the Layers List for this widget to produce information in Results.

- Drop a point
- Draw a multipart line
- Draw a freehand line
- Select an extent
- Select a circular area
- Select an ellipsis area
- Draw a polygon
- Draw a freehand polygon

# Search and Buffer



## SEARCH & BUFFER

- By Shape
- By Value
- By Spatial



### **Enable Multi-part Graphics**

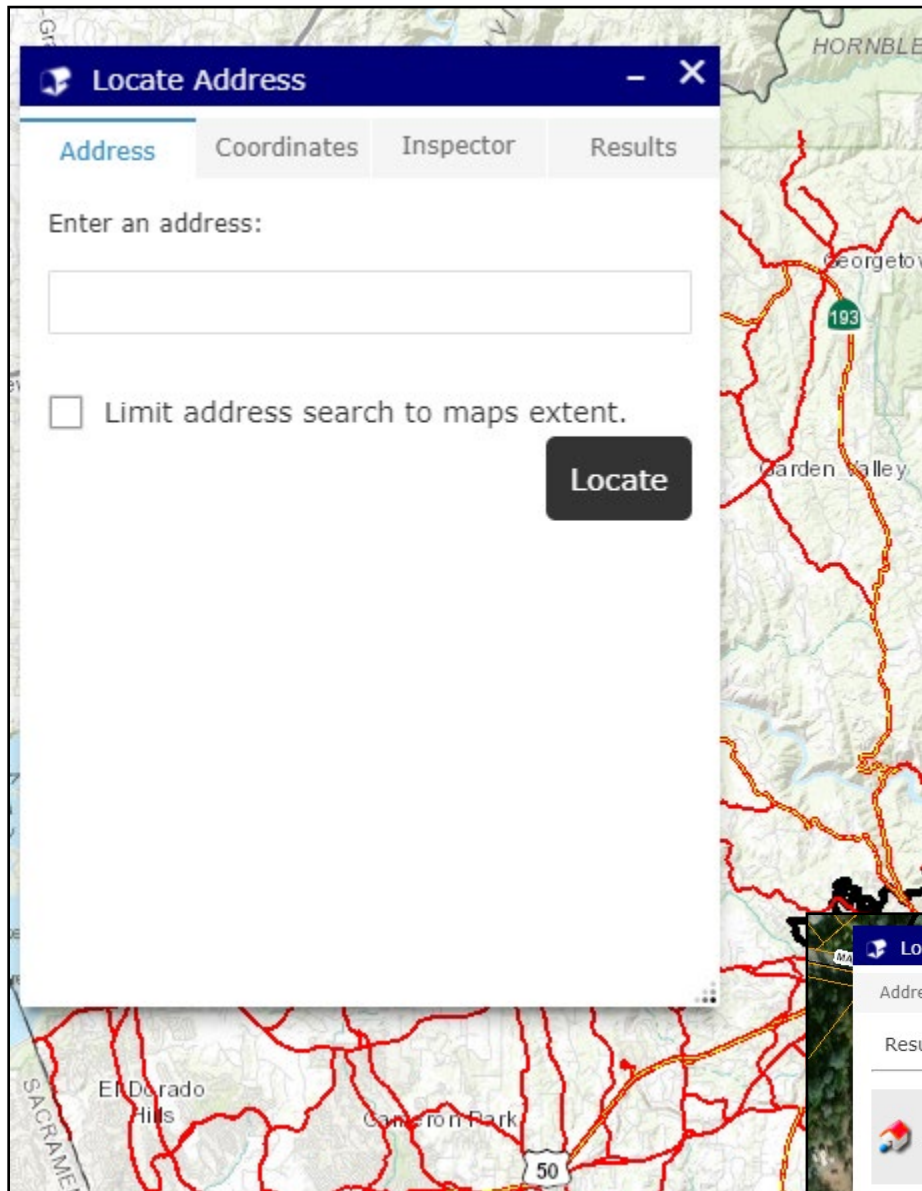
-If you check on the enable multi-part graphics then when you complete drawing on graphic you and can continue to draw the same geometry type and once you have drawn all the graphics you wish to search by then you can click Search to execute the search.

-If you don't check on the enable multi-part graphics then when you complete drawing on graphic the search is automatically executed.

### **Search Tolerance to Point Selection**

-If you choose the point graphic draw tool and are attempting to search for line or point feature then you should use the Add search tolerance to point selection.

# Locate Address



## LOCATE ADDRESS

- By Address
- By Coordinates
- By Inspector



### **Address**

Address may be input (number and street name only) and map will zoom to location and give near matches.

You may select to only search the maps current extent.

### **Coordinates**

Supported notation formats are Decimal Degrees, Degrees Minutes Seconds and State Plane (examples are given).

### **Inspector**

Allows you to toggle on an address locator, then click a location on the map to view an associated address.

Some locations are not addressed.

