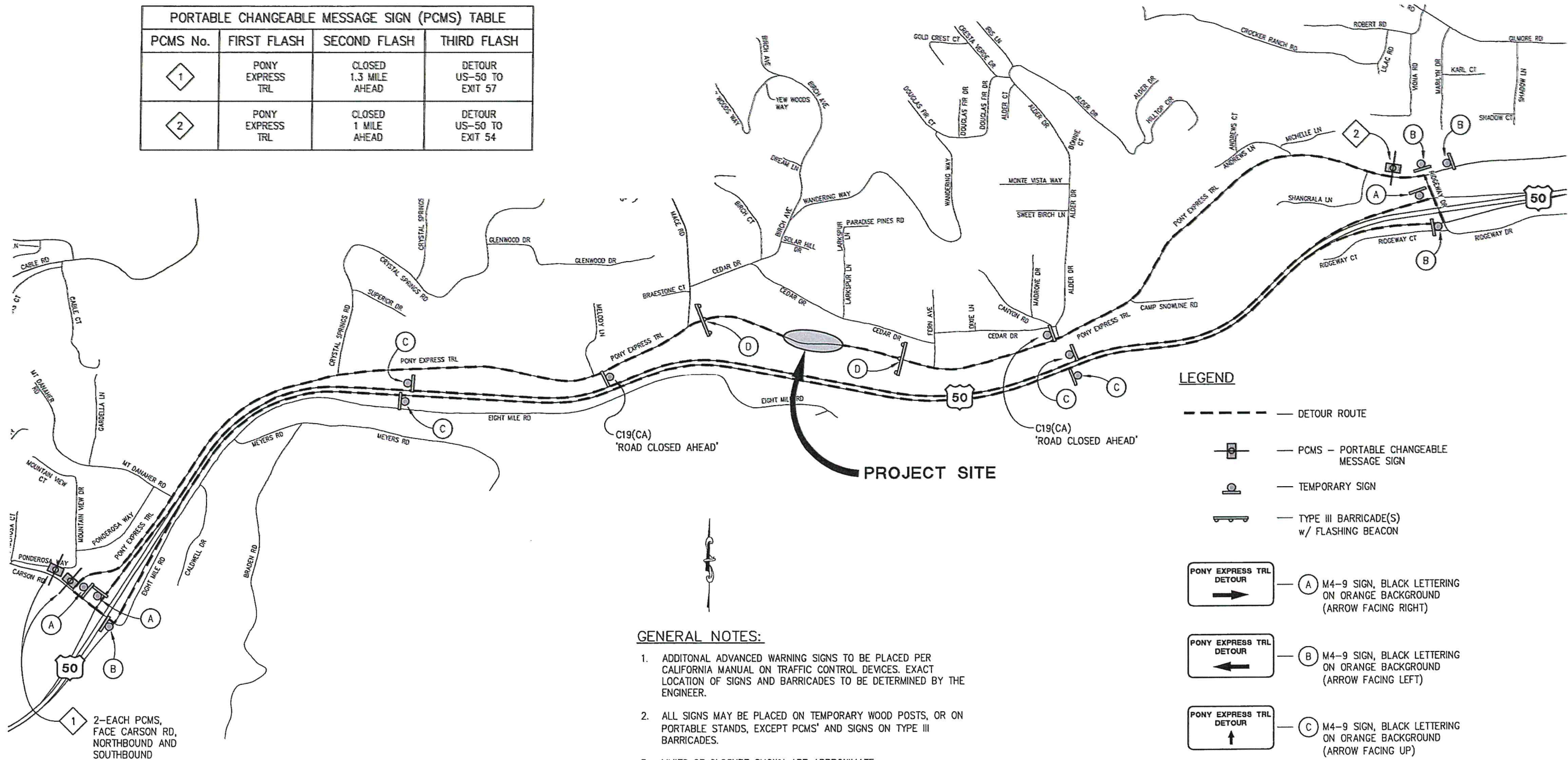


PORTABLE CHANGEABLE MESSAGE SIGN (PCMS) TABLE			
PCMS No.	FIRST FLASH	SECOND FLASH	THIRD FLASH
1	PONY EXPRESS TRL	CLOSED 1.3 MILE AHEAD	DETOUR US-50 TO EXIT 57
2	PONY EXPRESS TRL	CLOSED 1 MILE AHEAD	DETOUR US-50 TO EXIT 54



LEGEND

- DETOUR ROUTE
- PCMS — PORTABLE CHANGEABLE MESSAGE SIGN
- TEMPORARY SIGN
- TYPE III BARRICADE(S) w/ FLASHING BEACON
- (A) M4-9 SIGN, BLACK LETTERING ON ORANGE BACKGROUND (ARROW FACING RIGHT)
- (B) M4-9 SIGN, BLACK LETTERING ON ORANGE BACKGROUND (ARROW FACING LEFT)
- (C) M4-9 SIGN, BLACK LETTERING ON ORANGE BACKGROUND (ARROW FACING UP)
- (D) R11-2 SIGN, BLACK LETTERING ON ORANGE BACKGROUND, MOUNTED ON TYPE III BARRICADE W/FLASHING BEACON

GENERAL NOTES:

1. ADDITIONAL ADVANCED WARNING SIGNS TO BE PLACED PER CALIFORNIA MANUAL ON TRAFFIC CONTROL DEVICES. EXACT LOCATION OF SIGNS AND BARRICADES TO BE DETERMINED BY THE ENGINEER.
2. ALL SIGNS MAY BE PLACED ON TEMPORARY WOOD POSTS, OR ON PORTABLE STANDS, EXCEPT PCMS' AND SIGNS ON TYPE III BARRICADES.
3. LIMITS OF CLOSURE SHOWN ARE APPROXIMATE.
4. CONTRACTOR MUST MAINTAIN ACCESS TO ALL DRIVEWAYS DURING CONSTRUCTION.

DETOUR PLAN
SCALE : NONE

ORIGINAL SCALE IS IN INCHES
Drawing name: C:\Civil 3D Projects\99452 Tree Mortality Project\CADD Files\Exhibits\PC Detour.dwg Layout Tab: EX-1 Mar 01, 2018 - 12:25pm SMC-Vey

REVISION	NUMBER	DATE	DESCRIPTION	BY

PREPARED UNDER THE SUPERVISION OF :
REGISTERED CIVIL ENGINEER
DATE:

DESIGNED: - SGM
DRAWN: SGM
CHECKED: - DATE: 01/04/18
ROAD NUMBER: 025



COUNTY OF EL DORADO
DEPARTMENT OF TRANSPORTATION

TREE MORTALITY PROJECT
PHASE 3

SHEET
EX-1
1 OF 1
W.G. No.